

TEST REPORT

Client : Kopex Africa (Pty) Ltd
6 Hamburg Road, Benoni
Manufacturer : Kopex Africa (Pty) Ltd
Apparatus : Dry type transformer
Serial No. : GCT - 2500

Ratings assigned by the manufacturer:

Rated voltage : 11 / 1 / 3.3 kV
Vector group : Dyn11yn11
Power rating : 2500 kVA
Insulation level :

| Test | HV | LV 1 | | LV 2 | |
|------|-------|-----------|---------|-------|-----------|
| | Line | Line | Neutral | Line | Neutral |
| LI | 75 kV | Not rated | | 40 kV | Not rated |

Test voltage :

| | | | | |
|----|-------|----------------|------------|----------------|
| LI | 75 kV | Not applicable | Not tested | Not applicable |
|----|-------|----------------|------------|----------------|

Tests have been carried out in accordance with client's requirements.

Test procedures and test parameters were based on:

IEC 60076-11:2004 : Power transformers - Part 11: Dry-type transformers
Clause 21 : Lightning impulse test (type test)

Date of tests : 6 June 2014

Conclusion: The results are shown in section 5 of this report.

This report consists of the following pages:

Report forms : 4
Oscillogram(s) : 3
Photographs : 1
Drawing(s) : 4

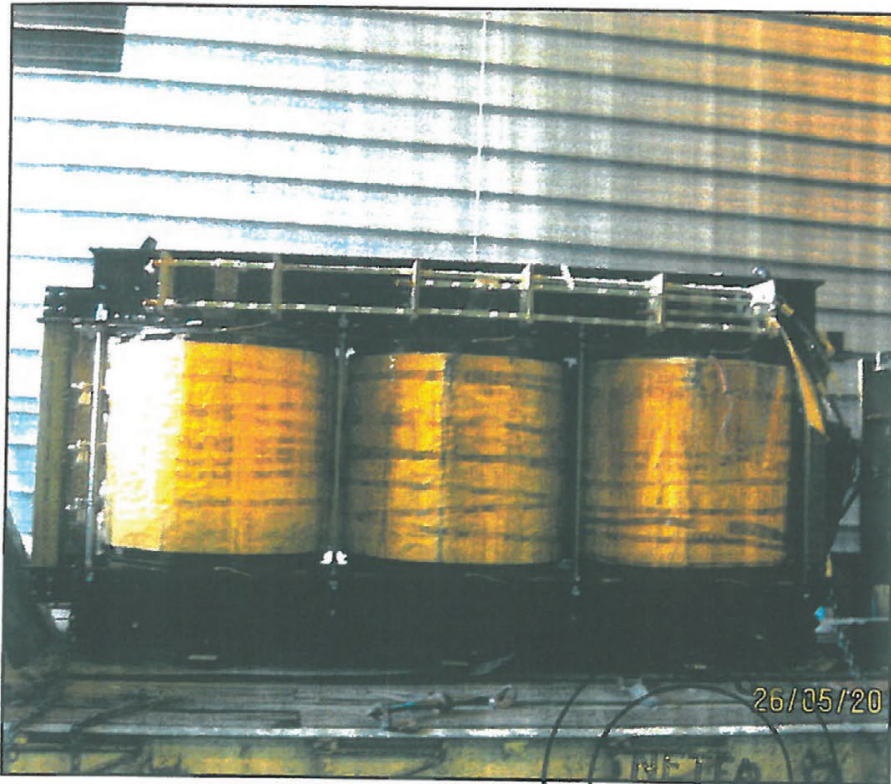

LAJ van den Heveer
Manager: High Voltage Laboratory
NETFA


BD Taylor (Technical Signatory)
Specialist: High Voltage Laboratory
NETFA

Olifantsfontein, 28 June 2014

43rd Street, Olifantsfontein. P.O. Box 144, Olifantsfontein, 1665.
Tel +27 11 238 2300. Fax +27 11 238 2363

The test work relating to this report was performed by SABS Commercial SOC Ltd. This report and its test results relate only to the specific sample(s) identified herein. They do not imply SABS approval of the quality and/or performance of the item(s) in question and the test results do not apply to any similar item that has not been tested. This report may not be reproduced except in full. The authenticity of this report and its contents can be confirmed by contacting the person who signed it.



Photographs : Transformer
Manufacturer: Kopex Africa (Pty) Ltd
Serial number: GCT - 2500

